

MY SLOT NOTES

RESULT = Robert E Sult
For the best reSULT conSULT SULT

EMBOSSER

Making Employee (RED) SDS Cards

Insert Red SDS Cards Face Up

Magnetic Strip down



When Done, Pick up your Red Cards Here



Note: If it's not in the Slot tech Layout. You will need to use the [Arrow Keys to select the Layout](#) then Press [<Enter>](#) Key



Use the [Arrow Keys to Select SLOTECH](#) then press [<Enter>](#) Key



Press [<Enter>](#) key



(This is the Number to be embossed on the card)

[Type Card Number then Press <Enter>](#)



(This is the Name to embossed on the card)

[Enter Employee Name then Press <Enter>](#)



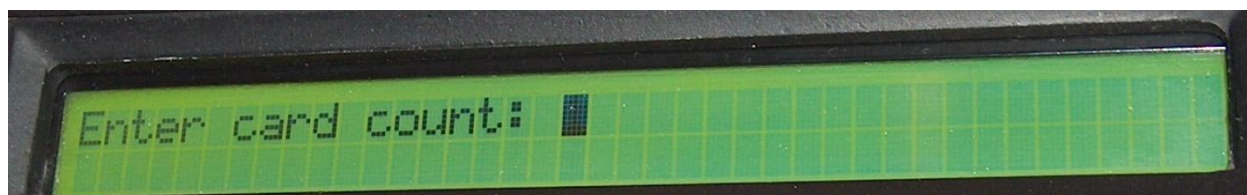
(This is the Number to be coded in the Magnetic Strip)

After you enter the 4-digit number the screen will go back to

Enter Card Number showing the 4 digits Number



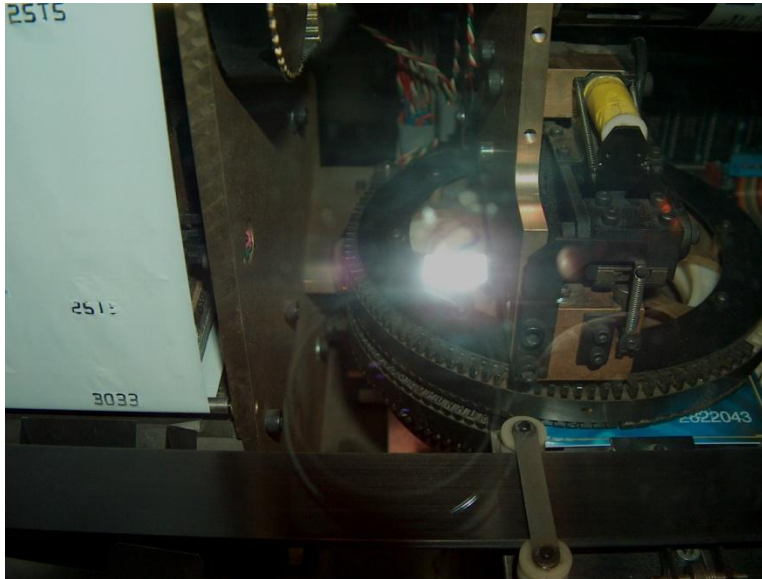
At this point press the + key



The Card Count should be 1 (One)

Then Press <Enter>

The embosser will make your 1 (One) card



NOTE: When done press ESC Key

Return Embosser to the



Or



Test the Card

Notes:



Use the Numbers Keys Here for Typing in the Numbers.

The Numbers on this side will not work

By: Robert Sult

With help from Patrick Leary